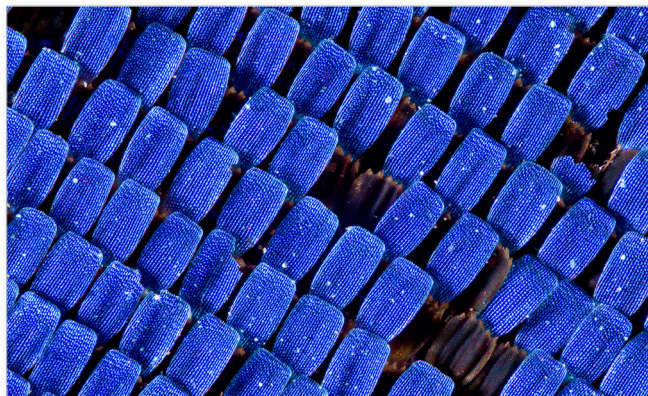



FOMEI
PHOTO

Archival Gloss 265



Archival Gloss 265
archival glossy RC paper 265 g/m²



 ICC profily a návody: www.fomei.com/profily
/ ICC profiles & guides: www.fomei.com/profiles

Řady inkoustových tiskáren kompatibilní s FOMEI PAPER
/ Inkjet printer series compatible with **FOMEI PAPER**:

Hobby tiskárny / Hobby printers:

Canon PIXMA G, MG, MX, iX, iP, TS
EPSON EcoTank L, Stylus Photo, XP
HP Smart Tank

Profesionální tiskárny / Professional printers:

Canon PIXMA PRO, iPF, iPF PRO
EPSON Stylus PRO (SP), SureColor P (SC-P)
HP DesignJet Z

Prémiový lesklý mikroporézní papír pro fotografie všech žánrů a digitální nátisky. ISO certifikace. TOP kvalita a stálost. Určení: lesklé fotografie a digitální nátisky určené k archivaci, papír vhodný k laminaci a kaširování
/ Premium glossy microporous paper for photos of all genres and digital proofs. ISO certification. Top quality and stability. Usage: glossy photos and digital proofs for archiving, suitable for overlaminating and mounting

parametr / parameter	hodnota / value	standard / norm
gramáž / grammage	265 g/m ²	ISO 536
tloušťka / thickness	260 μm	ISO 534
odstín (CIE-L*a*b*) / tint (CIE-L*a*b*)	95.8, 0.2, -3.2	CIE, D50/2°, M0
lesk 75° / gloss 75°	58 %	ISO 8254-1
opacita (neprůhlednost) / opacity	> 96 %	ISO 2471
jádro role / roll core	3" (76,2 mm)	softpress core



Potvrzena dlouhodobá obrazová stálost. Vhodné pro archivaci, galerijní tisky a limitované edice.
/ Confirmed long-term image stability. Suitable for archiving, gallery prints and limited editions.

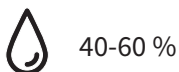


Doporučeno pro černobílé reprodukce.
/ Recommended for black and white reproductions.

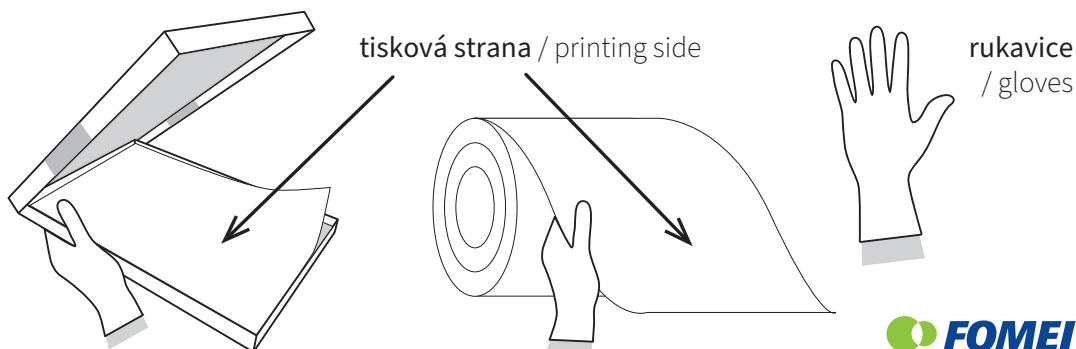
Manipulace s papírem / Paper handling



18-25 °C



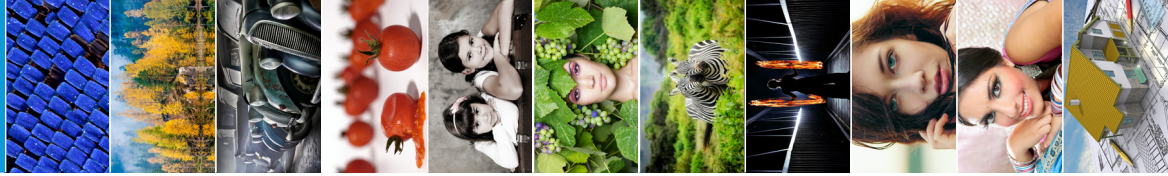
40-60 %





FOMEI PHOTO

photo papers for home and professional Canon, EPSON, HP printers



Archival Gloss 265

archival glossy RC paper 265 g/m²

Archival Velvet 265

archival semiglossy RC paper 265 g/m²

Archival Matt 260

archival matte paper 260 g/m²

PRO Gloss 300

premium glossy PE paper 300 g/m²

PRO Pearl 300

premium semiglossy PE paper 300 g/m²

PRO Gloss 265

glossy RC paper 265 g/m²

PRO Pearl 265

semiglossy RC paper 265 g/m²

PRO Gloss 205

glossy RC paper 205 g/m²

PRO Pearl 205

semiglossy RC paper 205 g/m²

Photo Matt 230

portrait deep matte paper 230 g/m²

Premium Matt 180

graphic matte paper 180 g/m²

available sheets - format [cm]

available rolls - width [cm]

	9x13	10x15	13x18	A5	15x23	A4	A3	A3+*	A2	A2+*	30.5	43.2	61.0	65.0	91.4	106.7	111.8	127.0	152.4	
glossy	●	●	●			●	●	●			●	●	●	●	●		●	●	●	●
semiglossy	●	●	●			●	●	●			●	●	●	●	●		●	●	●	●
matte						●	●	●			●	●	●	●	●		●	●	●	●
glossy	●	●	●			●	●	●			●	●	●	●	●		●	●	●	●
semiglossy	●	●	●			●	●	●			●	●	●	●	●		●	●	●	●
glossy	●	●	●			●	●	●			●	●	●	●	●		●	●	●	●
semiglossy	●	●	●			●	●	●			●	●	●	●	●		●	●	●	●
glossy	●	●	●			●	●	●			●	●	●	●	●		●	●	●	●
semiglossy	●	●	●			●	●	●			●	●	●	●	●		●	●	●	●
matte	●	●	●			●	●	●			●	●	●	●	●		●	●	●	●
matte	●	●	●			●	●	●			●	●	●	●	●		●	●	●	●